



TECHNICAL DATA SHEET

PHTHALOCYANINE BLUE 15:1

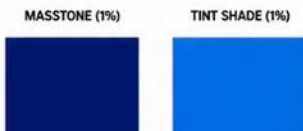


High Performance Copper Phthalocyanine Pigment

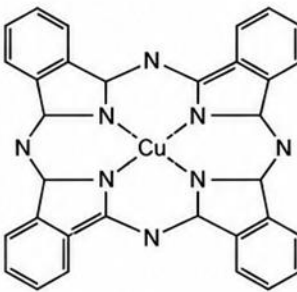


PRODUCT IDENTIFICATION

Chemical Class	Copper Phthalocyanine
CI Name	Pigment Blue 15:1
CI No.	74160
CAS No.	147-14-8
EINECS / EC No.	205-685-1
Molecular Formula	C ₃₂ H ₁₆ CuN ₈
Molecular Weight	576.06
Appearance	Greenish Blue Powder
Shade	Greenish Blue



CHEMICAL STRUCTURE



KEY FEATURES

- High Colour Strength
- Excellent Heat Stability
- Chemical & Solvent Resistance
- Good Opacity
- Reliable Dispersion

APPLICATIONS



Paints & Coatings



Printing Inks



Plastics & Masterbatch



Rubber & Elastomers



Textile Applications

TYPICAL PACKAGING



25 Kg / 20 Kg
Triple Lined HDPE Bags with PE Liner or as per customer request

PHYSICAL & CHEMICAL PROPERTIES

PARAMETER	SPECIFICATION	TEST METHOD
Colour (Shade)	Greenish Blue	Visual
Colour Index	PB 15:1	ISO 787-24
Tinting Strength (%)	95 - 105	ISO 787-24
Heat Resistance	Up to 300°C	ISO 787-24
Light Fastness (Full Shade)	7 - 8	ISO 105-B02
Weather Fastness	5	ISO 105-B04
Oil Absorption (g/100g)	45 - 60	ISO 787-5
pH (10% Extract)	6.0 - 8.0	ISO 787-9
pH Value	6.0 - 8.0	ISO 787-9
Bulk Density (g/litre)	1.1 - 1.7	ISO 787-11
Sieve Residue (325 µm) (%)	Max. 0.5	ISO 787-7

STORAGE



Store in a cool, dry and well-ventilated area, from direct sunlight and moisture. Keep containers tightly closed when not in use.

SHELF LIFE



24 months from date of manufacture under proper storage conditions.

COMPLIANCE

- REACH Registered
- RoHS Compliant
- Heavy Metals Compliant
- Free from AZO Dyes
- Complies with EN-71-3



DISCLAIMER: The information and recommendations contained herein are based on tests believed to be reliable. However, the buyer/user assumes all risk and liability resulting from the use of our products, whether used alone or in combination with other products. It is the user's responsibility to determine the suitability of our products for the user's intended purpose and application.
NOTE: The technical data provided is typical values and is not intended to be used as a specification.

Version: 1.0
Date of Issue: May 2024